

Minnipa-Related Plans

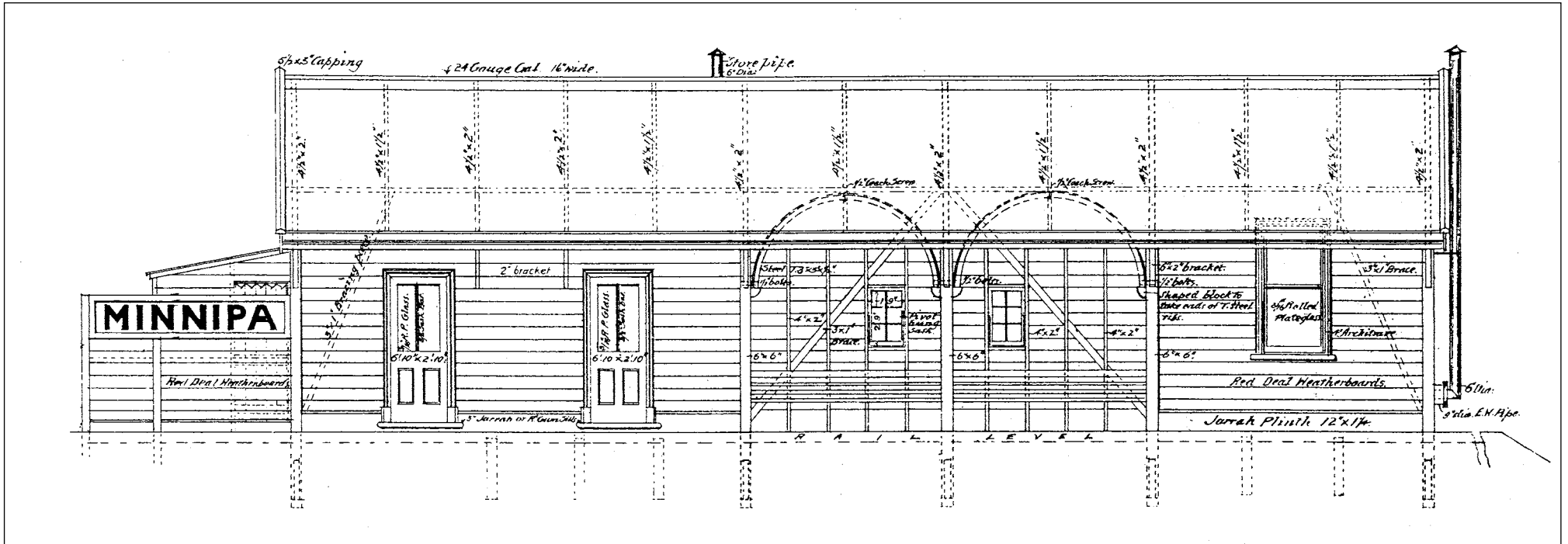
HO Scale

To assist modellers, plans of a variety of structures related to the South Australian Railways at Minnipa are reproduced in the following pages. For convenience, they are scaled as closely as possible to HO scale (1:87). When printing pages, the best results can be obtained by using the Adobe print button and selecting “None” for Page Scaling.

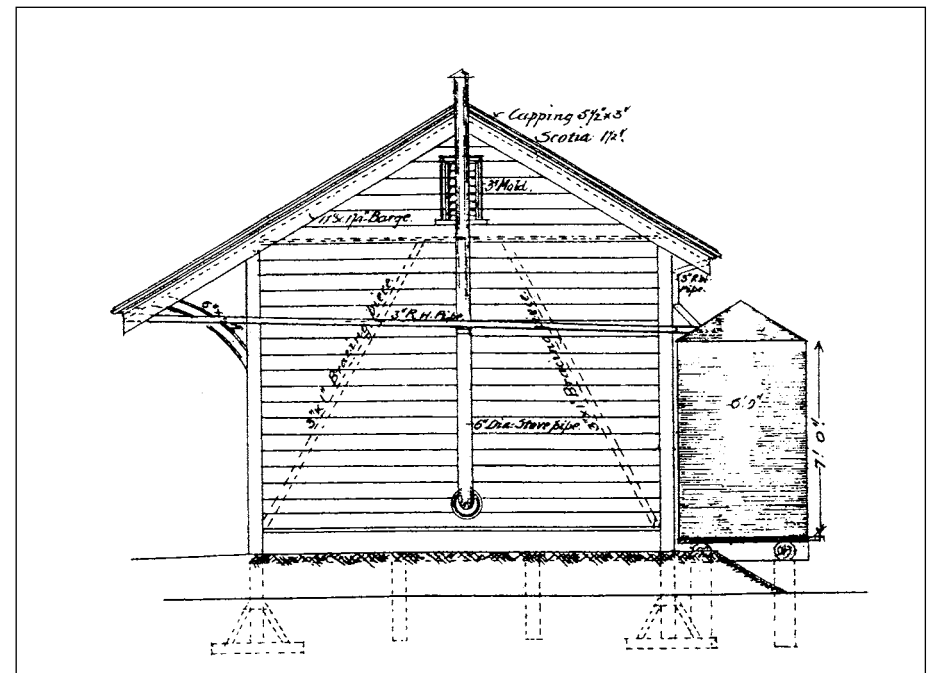
Many of the structures were built to standard designs (or slight variations on those), so should be of interest to modellers of the SAR statewide.

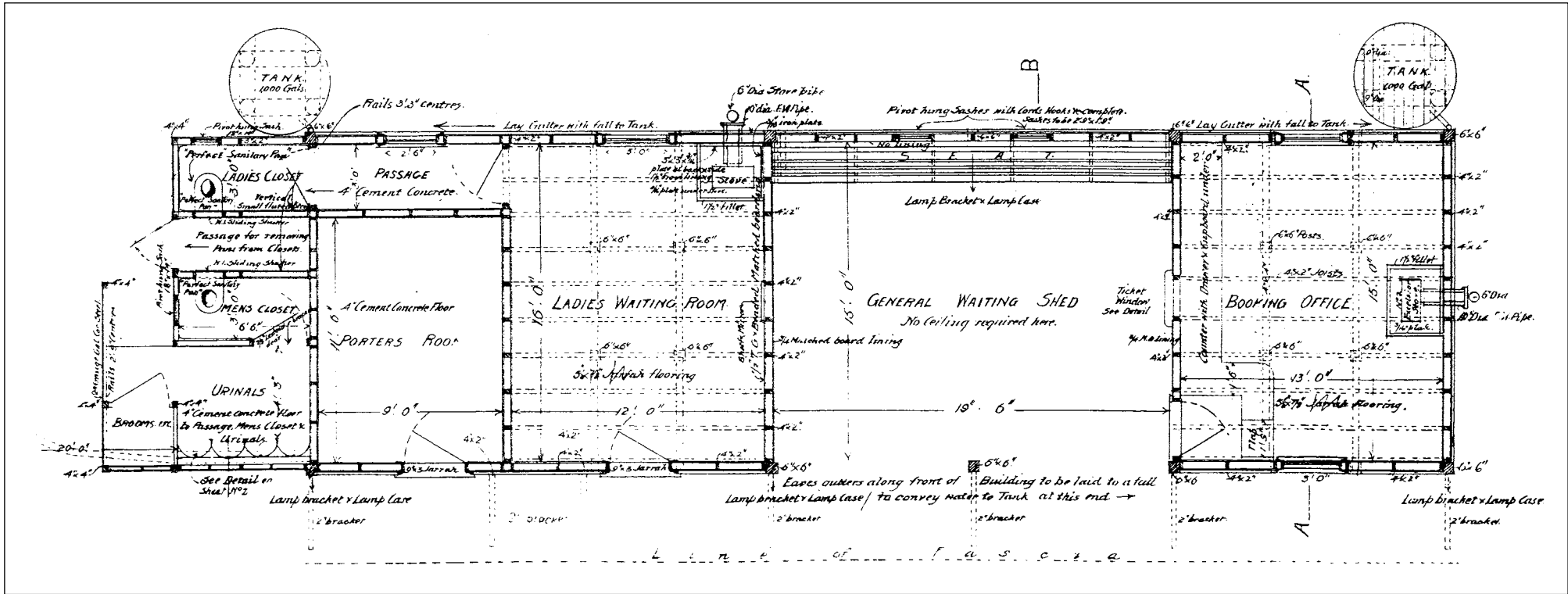
The plans are generally scans of old SAR diagrams from a variety of sources, but particular acknowledgement is made to Ray Zeffert for allowing access to his original (1911) set of construction plans for the Yeelanna - Minnipa Hill Railway.

Subject	Plans	Page
Minnipa station building	Front and side elevations	2
	Plan	3
Shelter shed	Front elevation, section and plan	4
Small goods shed and ramp	Front and side elevations	5
	Plan	6
Engine shed (2 tracks)	Side elevation	7
	Front elevation	8
	Plan	9
Small coal stage	Front and side elevations, plan	10
Maintenance barracks	Section	11
	Plan	12
Transportation barracks	Front and side elevations	13
	Plan	14
Overhead ballast bins	Front elevation	15
	End elevation	16

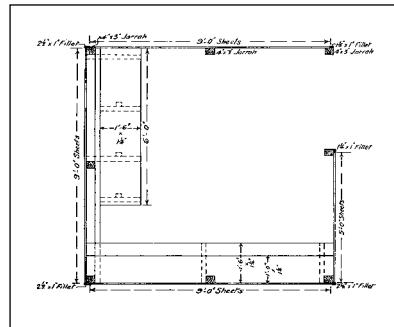
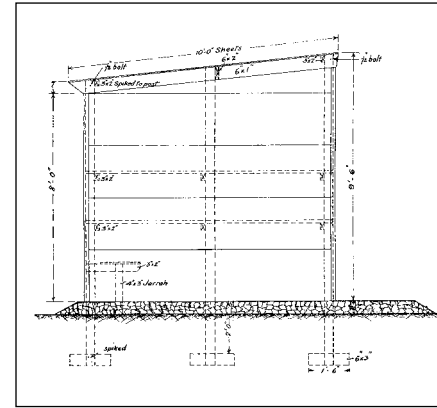
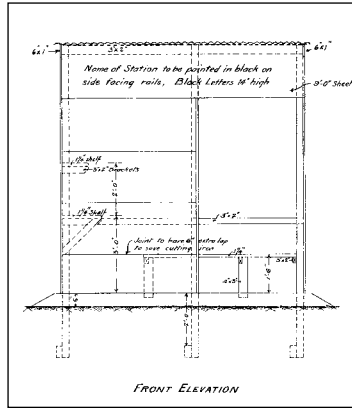


Minnipa Station Building (1913)
 Front and side elevations

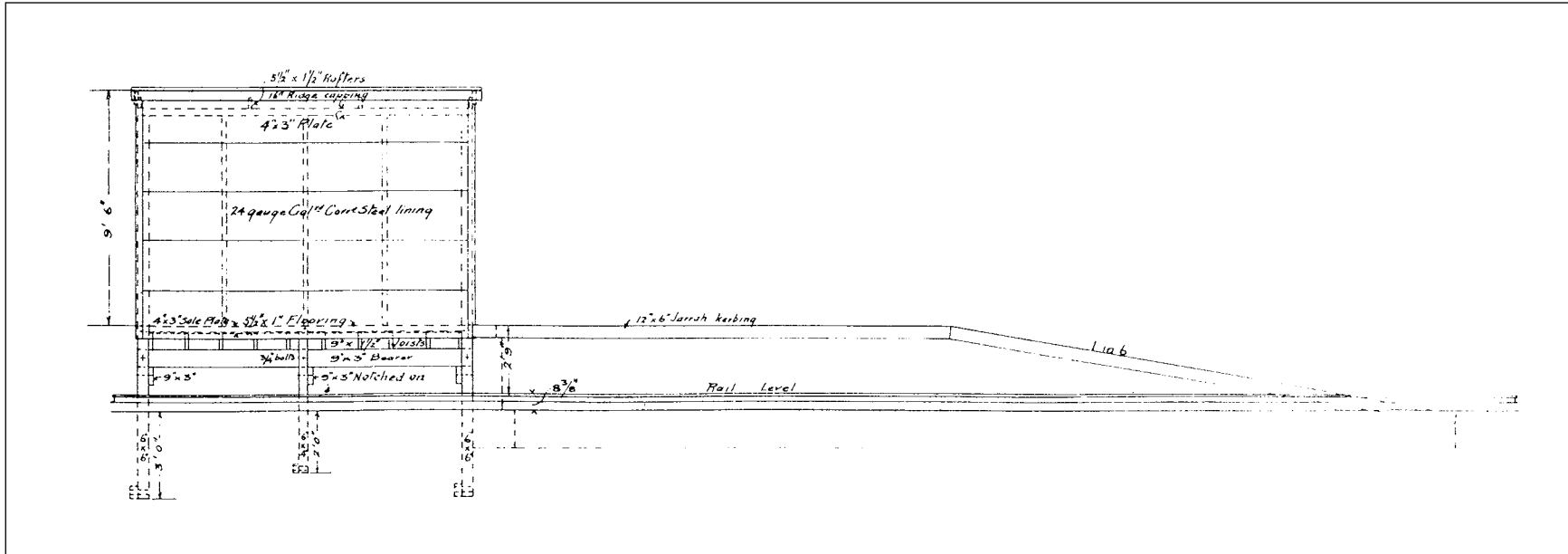




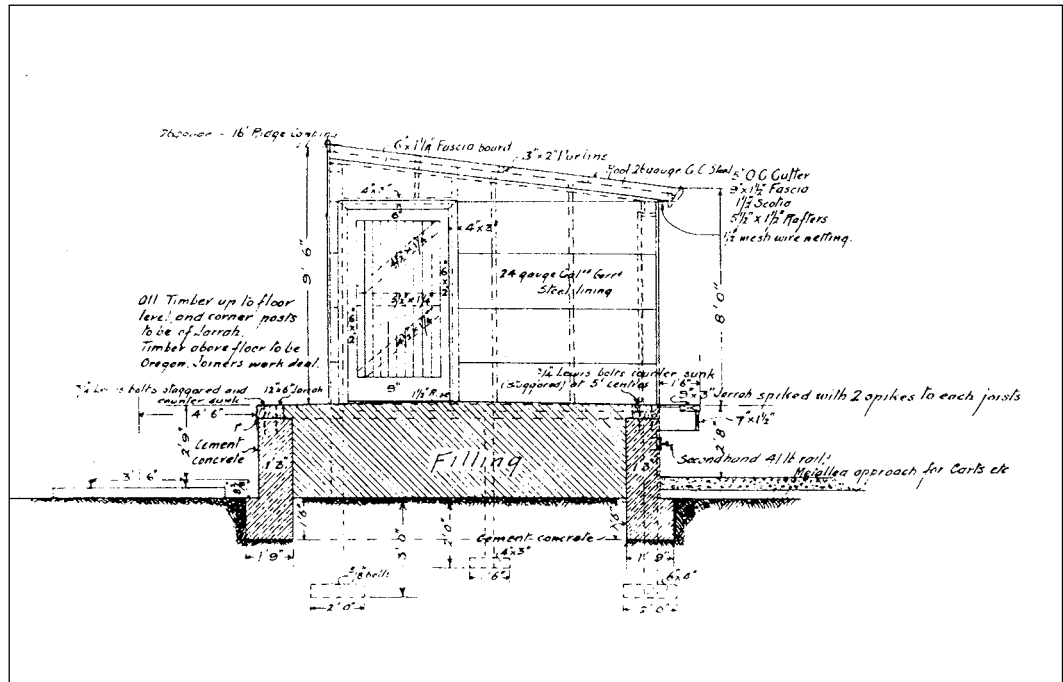
Minnipa Station Building (1913)
Plan

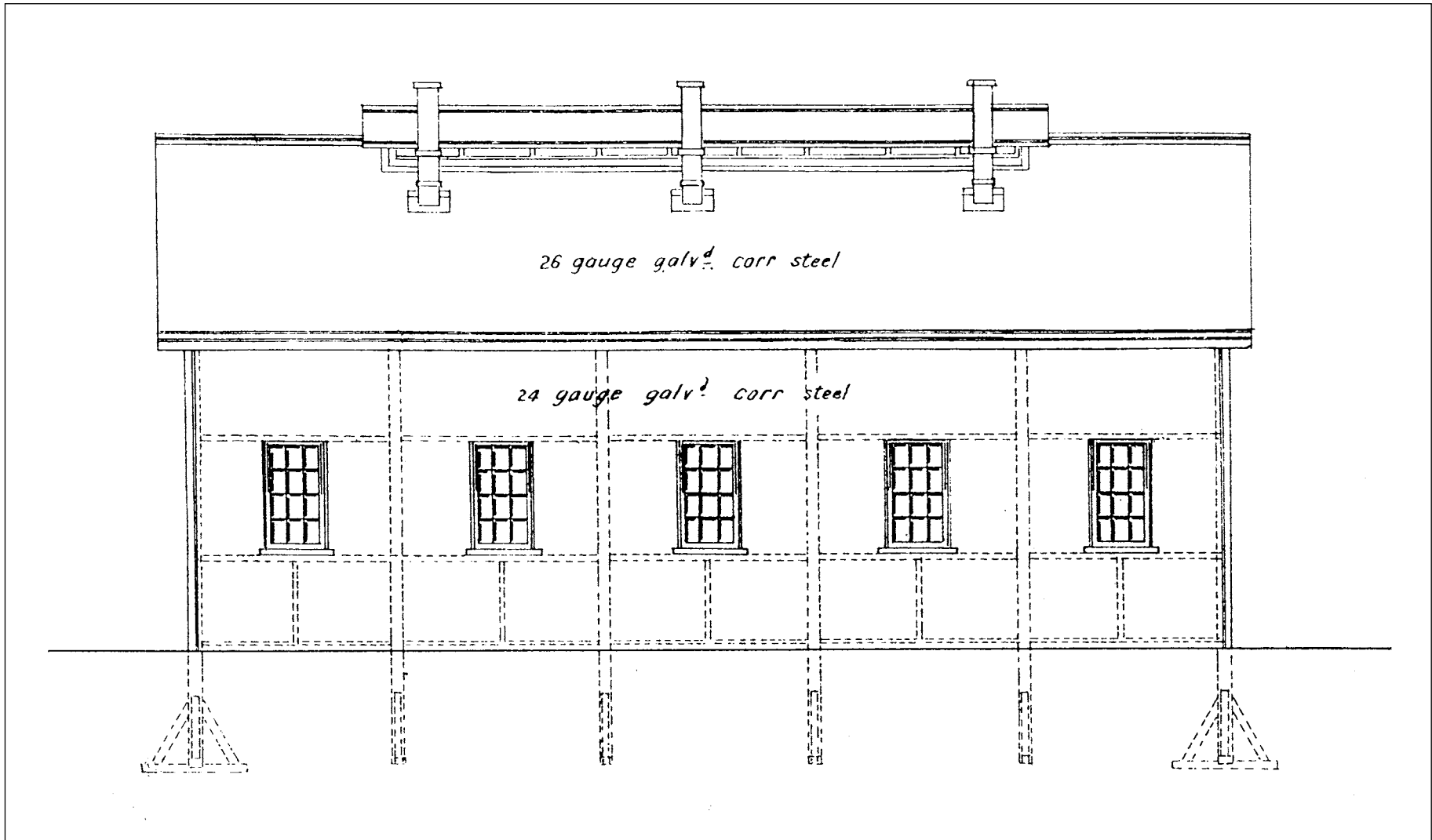


Shelter Shed
Front elevation, section and plan

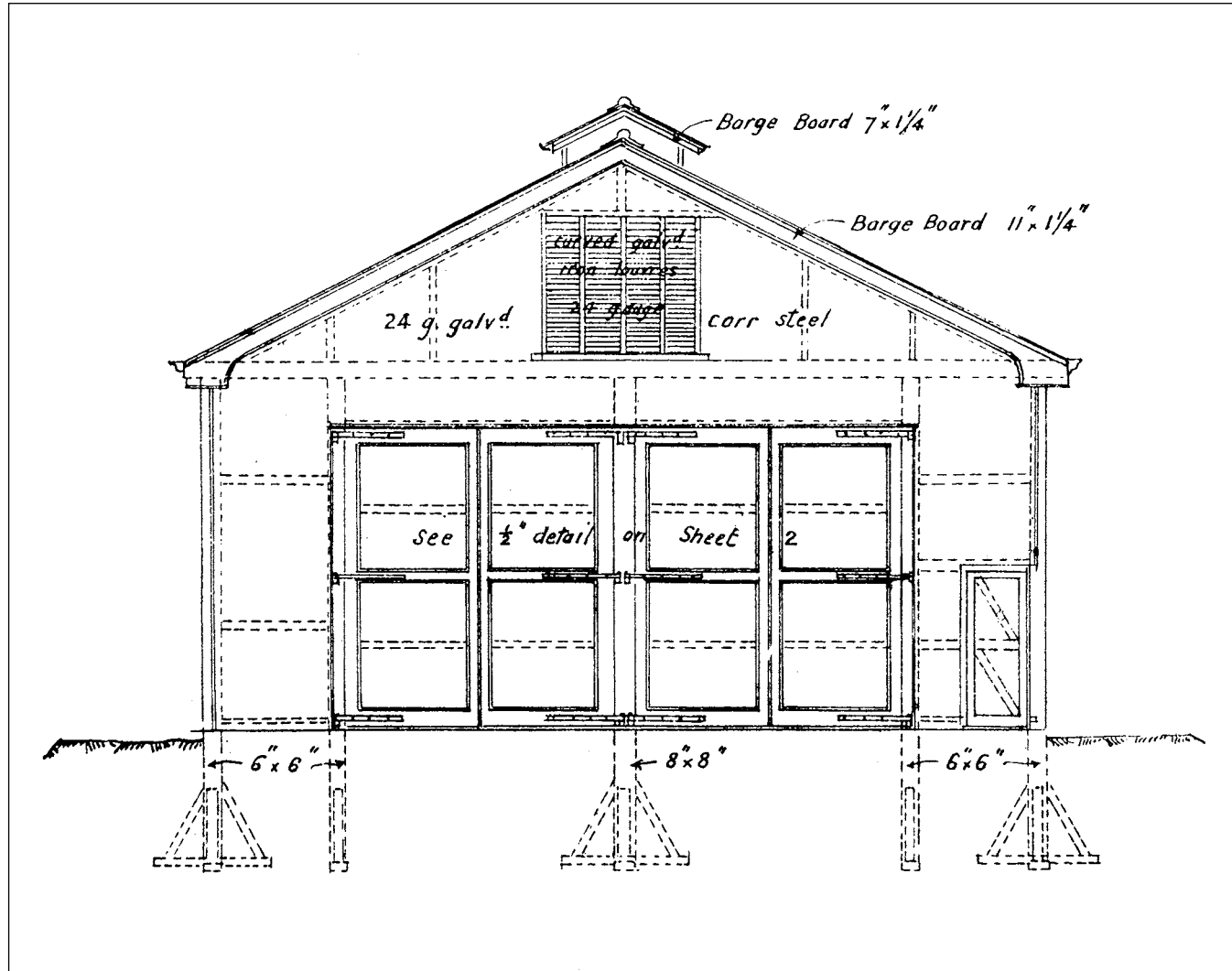


Small Goods Shed and Ramp
 Front and side elevations





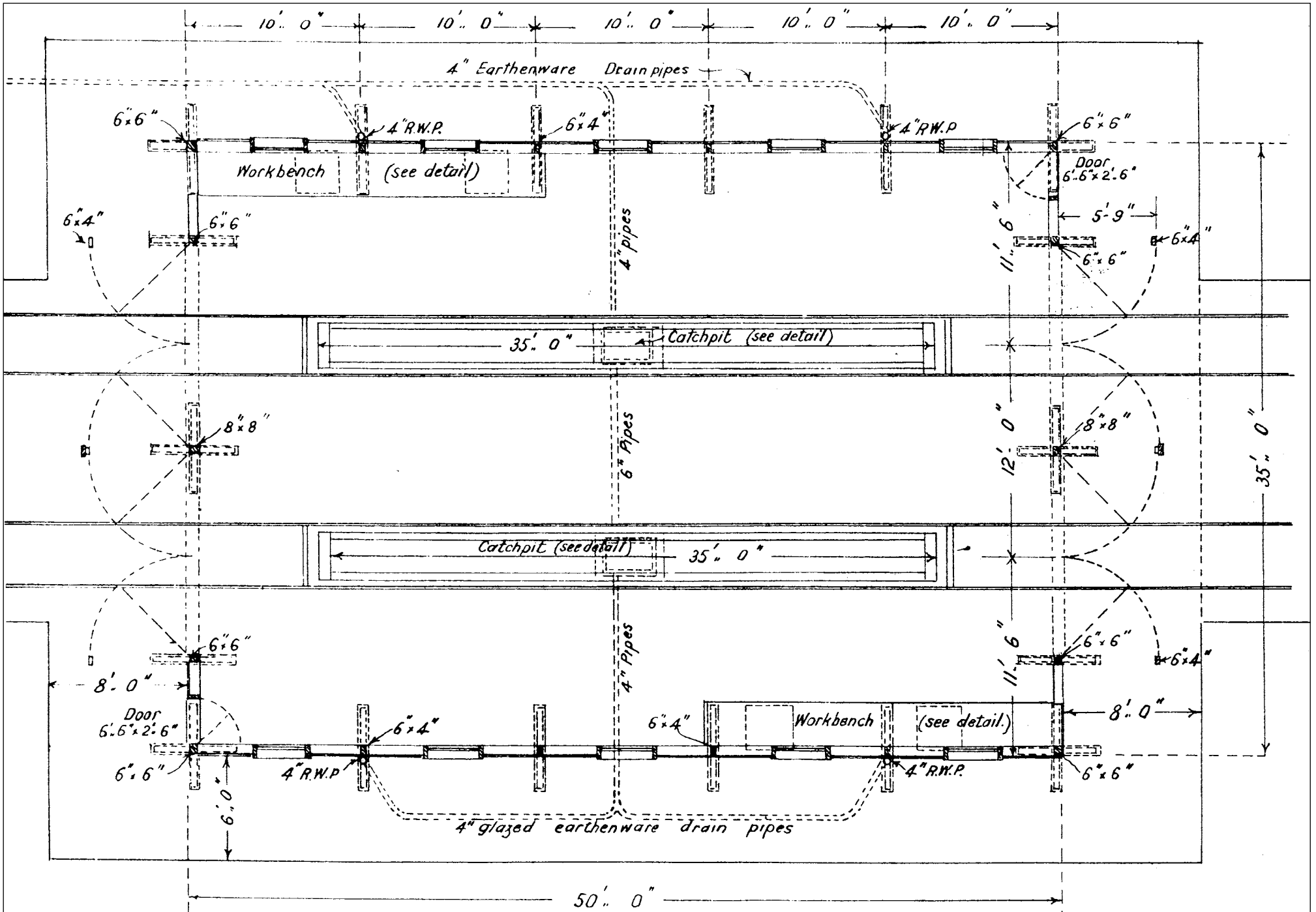
Minnipa Engine Shed (1913)
Side elevation

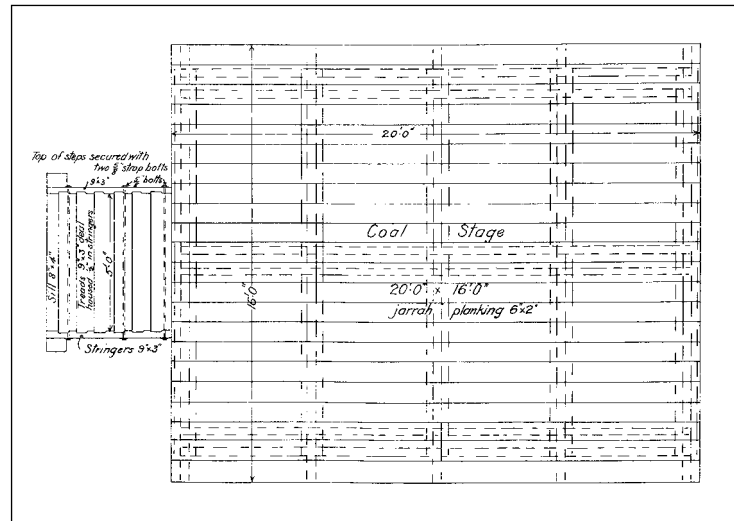
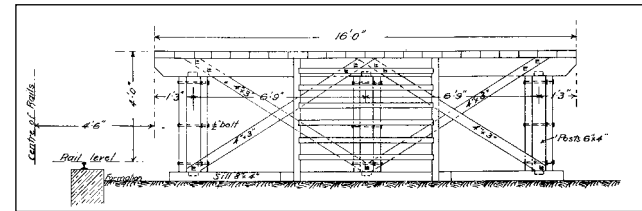
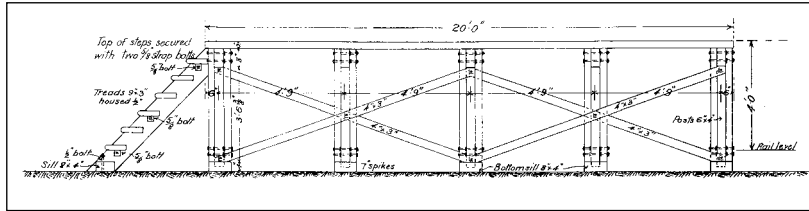


Minnipa Engine Shed (1913)

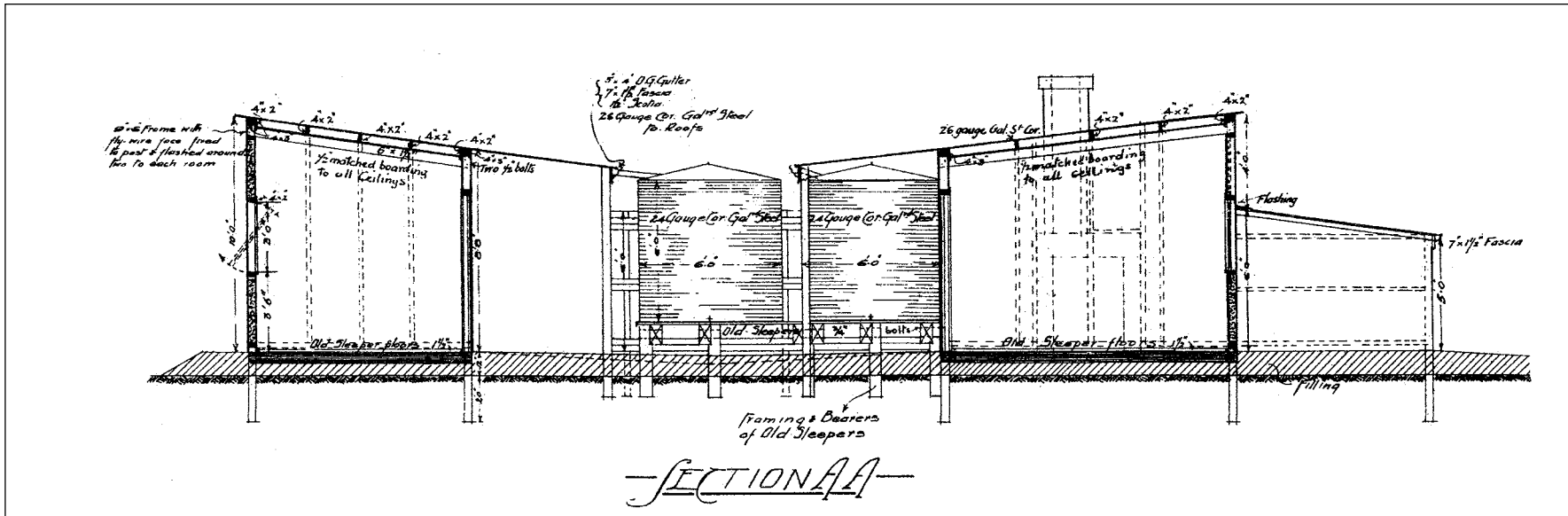
Front elevation

Next page: Plan

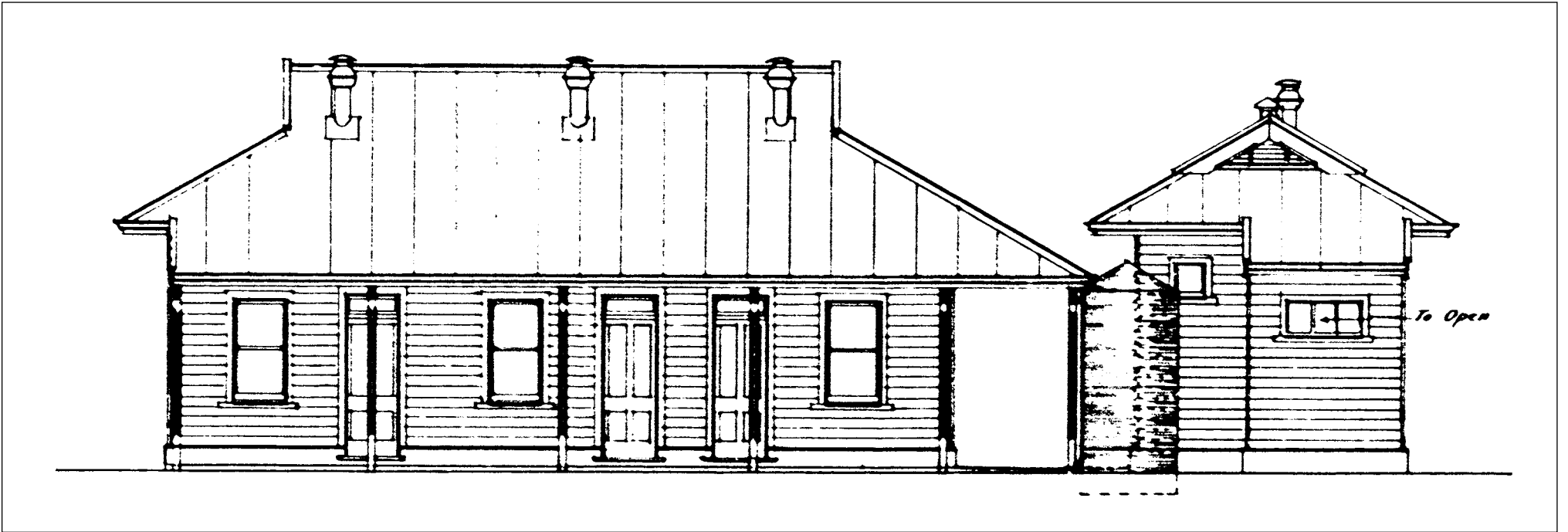




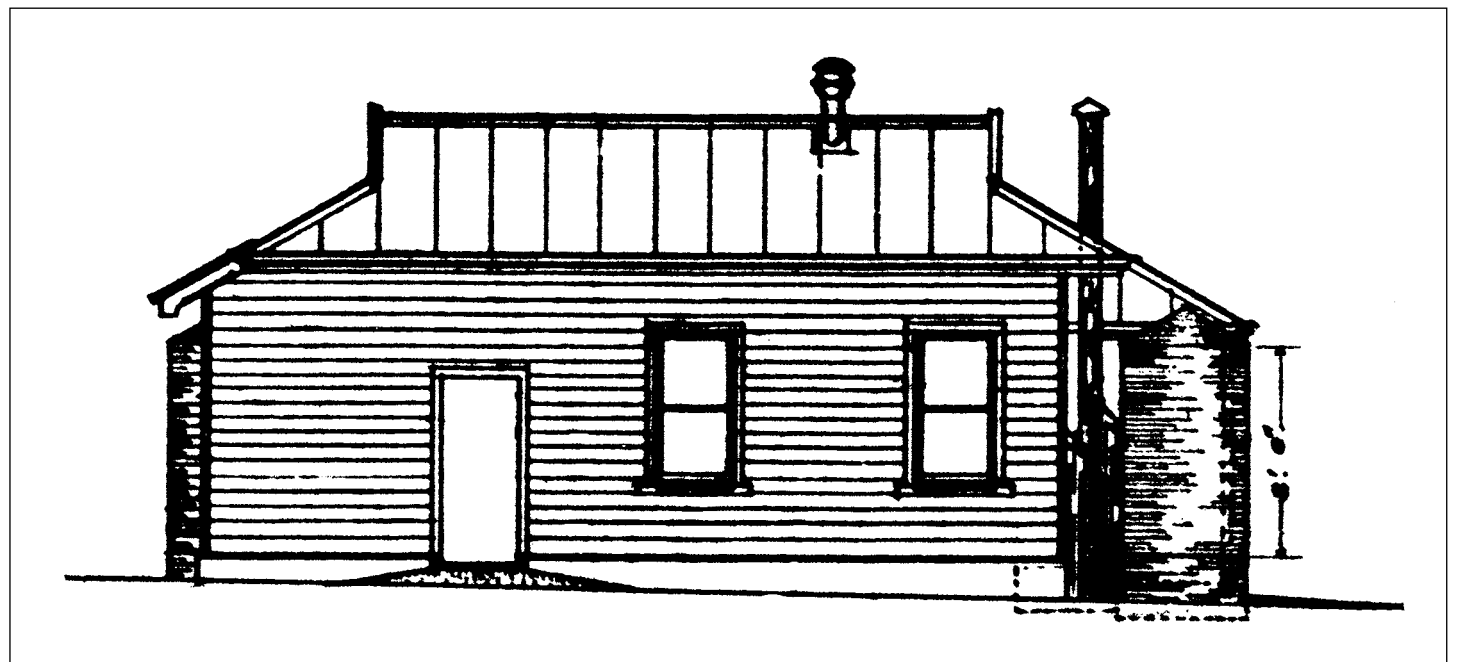
Small Coal Stage
Front and side elevations, plan

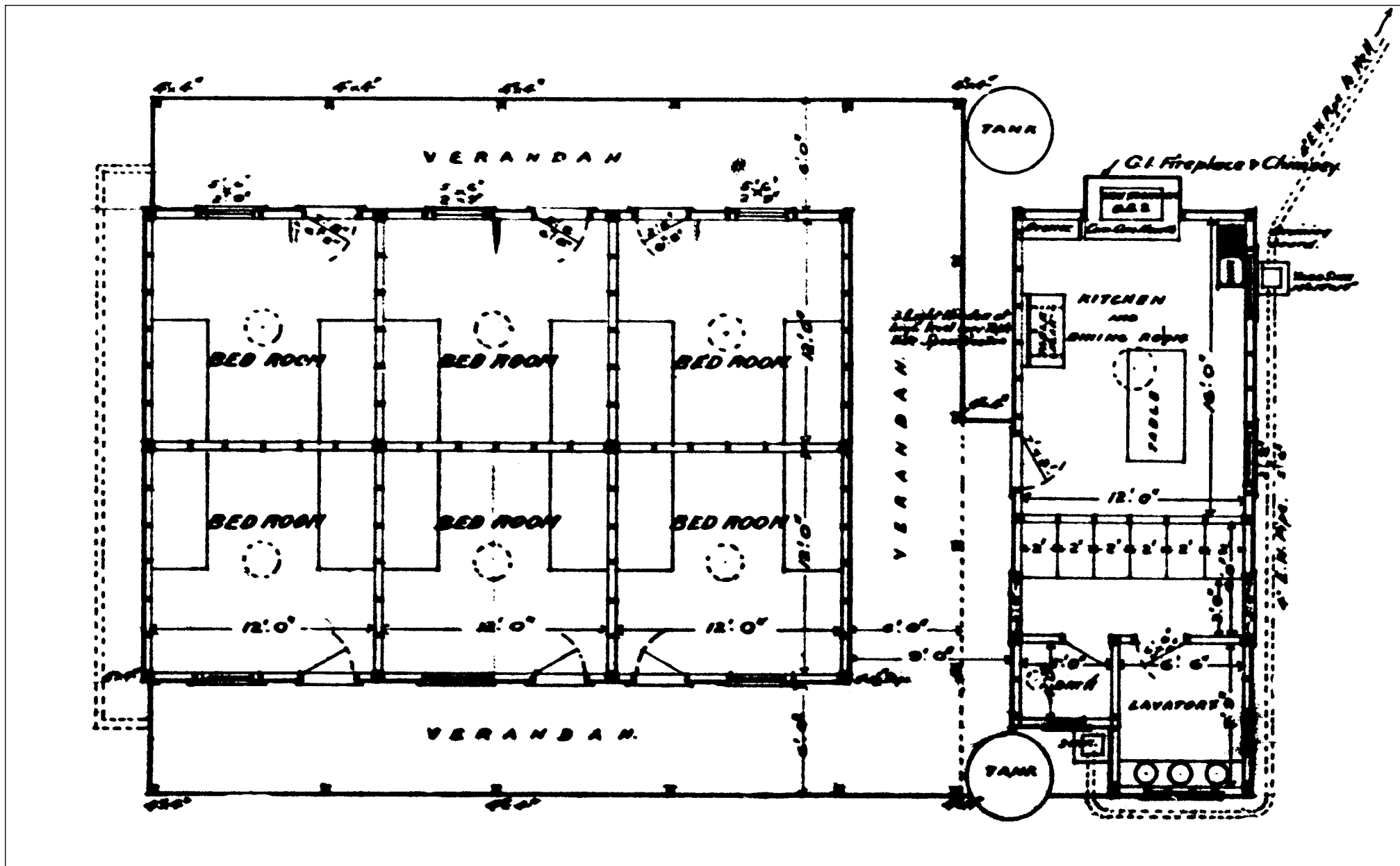


Maintenance Barracks (1913)
Section

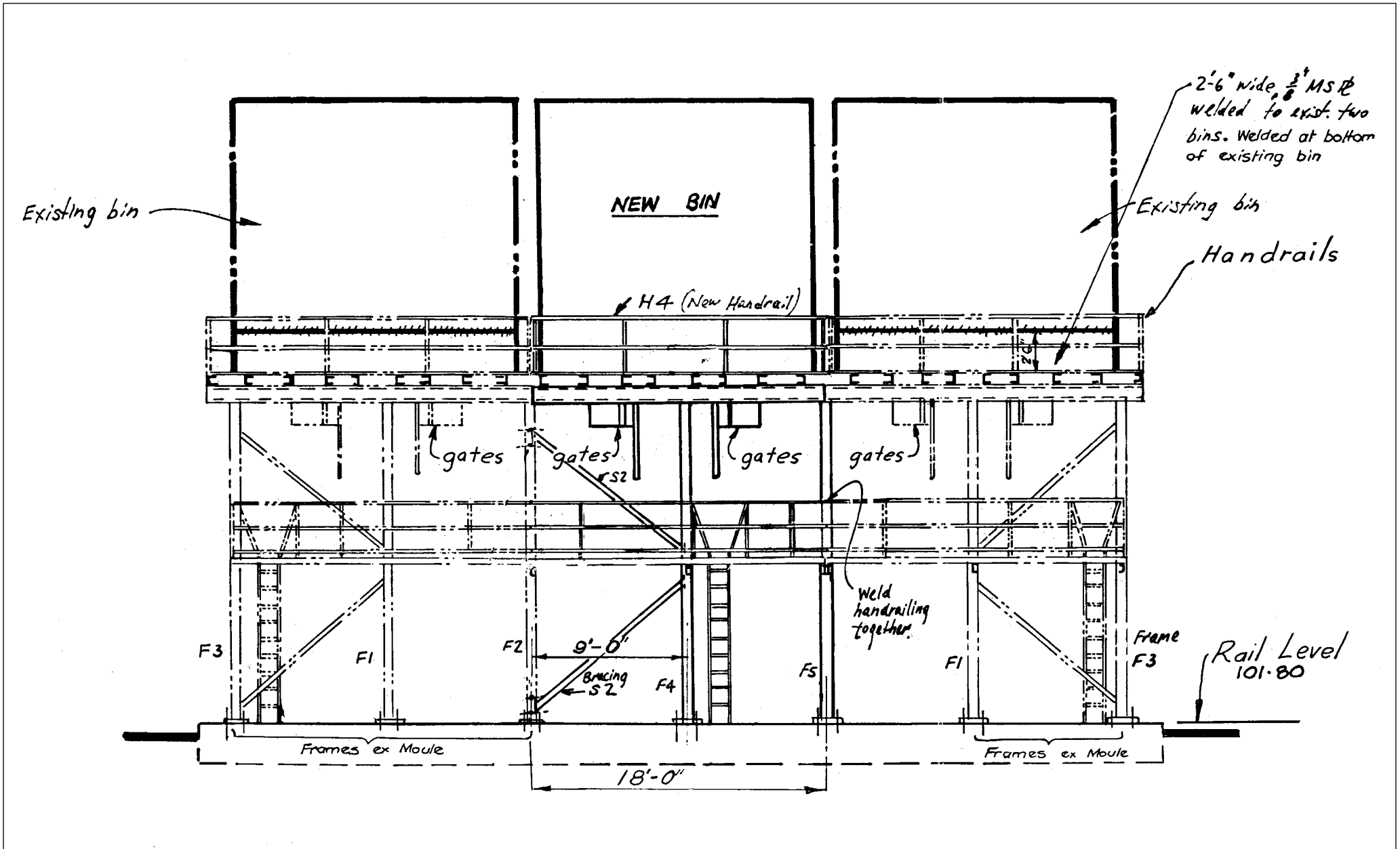


Transportation Barracks (c.1920)
Front and side elevations

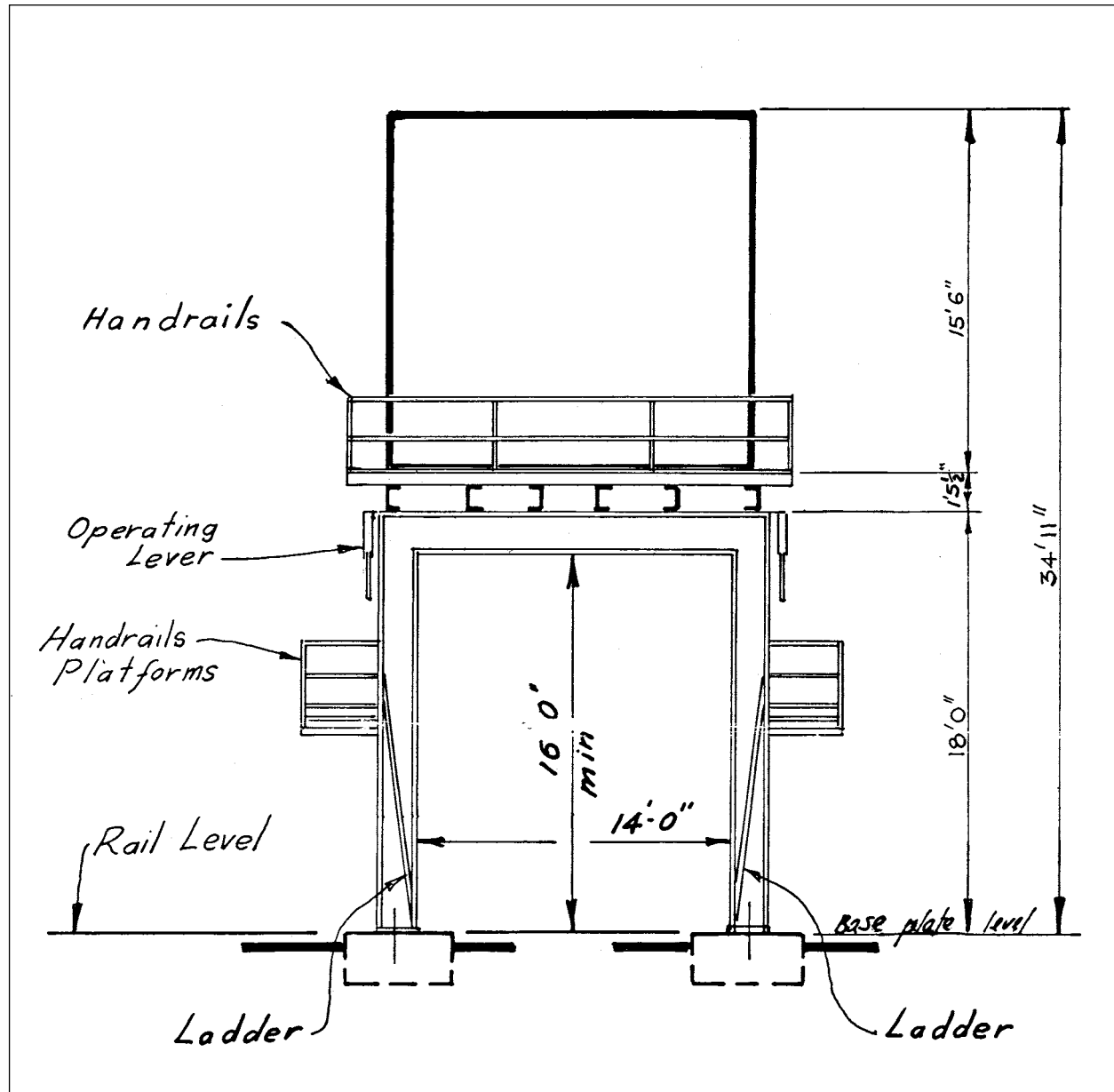




Transportation Barracks (c.1920)
Plan



Minnipa Ballast Bins (1969)
Side elevation



Minnipa Ballast Bins (1969)
End elevation